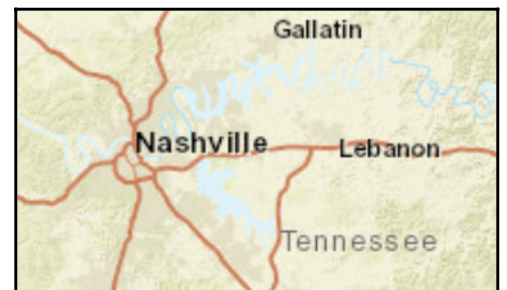
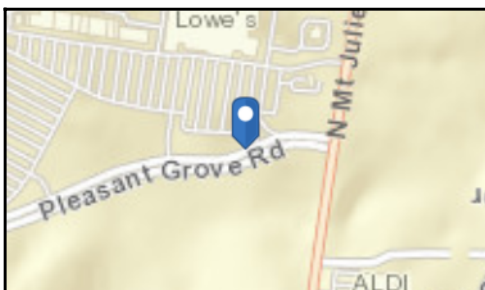
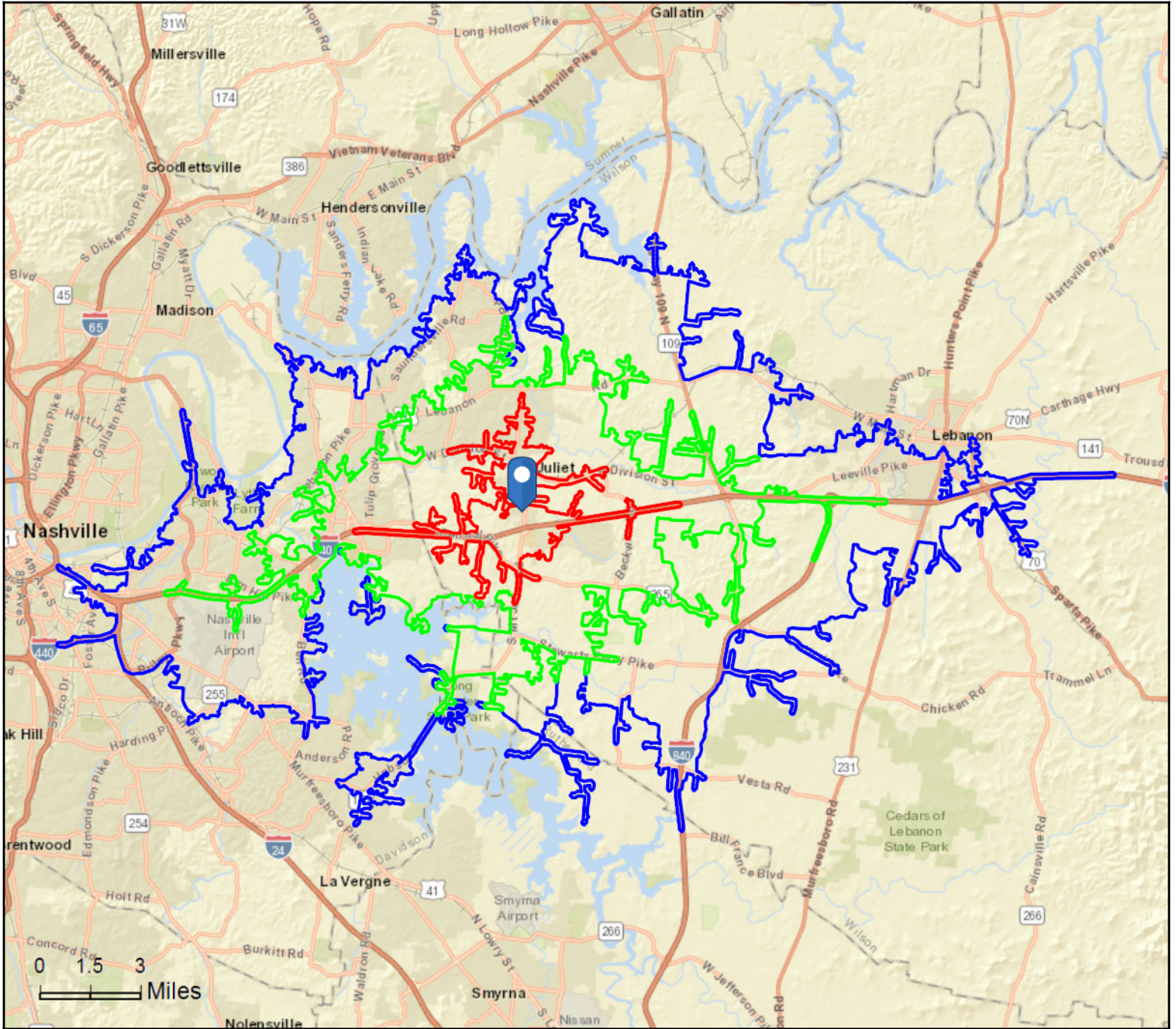


Paddocks at Mt. Juliet
300 Pleasant Grove Rd, Mount Juliet, Tennessee, 37122
Drive Time: 7, 13, 19 minute radii

Prepared by Esri
Latitude: 36.17805
Longitude: -86.51411





Community Profile

Paddocks at Mt. Juliet
 300 Pleasant Grove Rd, Mount Juliet, Tennessee, 37122
 Drive Time: 7, 13, 19 minute radii

Prepared by Esri
 Latitude: 36.17805
 Longitude: -86.51411

	7 minutes	13 minutes	19 minutes
Population Summary			
2000 Total Population	5,166	42,244	122,483
2010 Total Population	6,441	58,128	146,539
2019 Total Population	8,797	74,435	178,424
2019 Group Quarters	18	232	956
2024 Total Population	10,094	83,575	195,931
2019-2024 Annual Rate	2.79%	2.34%	1.89%
2019 Total Daytime Population	14,409	59,398	174,517
Workers	10,294	26,578	95,878
Residents	4,115	32,820	78,639
Household Summary			
2000 Households	2,102	16,718	49,225
2000 Average Household Size	2.45	2.50	2.46
2010 Households	2,654	23,456	59,323
2010 Average Household Size	2.42	2.47	2.46
2019 Households	3,585	29,687	70,993
2019 Average Household Size	2.45	2.50	2.50
2024 Households	4,098	33,206	77,623
2024 Average Household Size	2.46	2.51	2.51
2019-2024 Annual Rate	2.71%	2.27%	1.80%
2010 Families	1,892	15,617	38,096
2010 Average Family Size	2.86	3.00	3.01
2019 Families	2,571	19,955	46,015
2019 Average Family Size	2.87	3.01	3.05
2024 Families	2,940	22,416	50,434
2024 Average Family Size	2.88	3.01	3.06
2019-2024 Annual Rate	2.72%	2.35%	1.85%
Housing Unit Summary			
2000 Housing Units	2,277	17,751	52,045
Owner Occupied Housing Units	68.3%	64.3%	60.4%
Renter Occupied Housing Units	24.0%	29.9%	34.2%
Vacant Housing Units	7.6%	5.8%	5.4%
2010 Housing Units	2,869	25,003	63,874
Owner Occupied Housing Units	61.6%	60.2%	60.3%
Renter Occupied Housing Units	31.0%	33.6%	32.6%
Vacant Housing Units	7.5%	6.2%	7.1%
2019 Housing Units	3,776	30,956	75,260
Owner Occupied Housing Units	56.3%	62.5%	61.1%
Renter Occupied Housing Units	38.7%	33.4%	33.2%
Vacant Housing Units	5.1%	4.1%	5.7%
2024 Housing Units	4,298	34,454	81,846
Owner Occupied Housing Units	58.4%	63.8%	62.4%
Renter Occupied Housing Units	36.9%	32.6%	32.4%
Vacant Housing Units	4.7%	3.6%	5.2%
Median Household Income			
2019	\$76,047	\$73,118	\$65,513
2024	\$84,440	\$81,256	\$74,149
Median Home Value			
2019	\$265,530	\$252,075	\$226,690
2024	\$289,942	\$277,279	\$255,533
Per Capita Income			
2019	\$36,780	\$35,325	\$33,063
2024	\$41,893	\$40,058	\$37,644
Median Age			
2010	36.4	35.4	36.3
2019	39.2	37.6	38.5
2024	39.0	38.3	39.3

Data Note: Household population includes persons not residing in group quarters. Average Household Size is the household population divided by total households. Persons in families include the householder and persons related to the householder by birth, marriage, or adoption. Per Capita Income represents the income received by all persons aged 15 years and over divided by the total population.

Source: U.S. Census Bureau, Census 2010 Summary File 1. Esri forecasts for 2019 and 2024 Esri converted Census 2000 data into 2010 geography.



Community Profile

Paddocks at Mt. Juliet
 300 Pleasant Grove Rd, Mount Juliet, Tennessee, 37122
 Drive Time: 7, 13, 19 minute radii

Prepared by Esri
 Latitude: 36.17805
 Longitude: -86.51411

	7 minutes	13 minutes	19 minutes
2019 Households by Income			
Household Income Base	3,585	29,687	70,993
<\$15,000	4.8%	4.7%	5.7%
\$15,000 - \$24,999	4.5%	5.4%	6.5%
\$25,000 - \$34,999	6.6%	7.0%	8.0%
\$35,000 - \$49,999	12.4%	11.7%	13.0%
\$50,000 - \$74,999	20.7%	22.4%	23.5%
\$75,000 - \$99,999	16.8%	16.1%	15.6%
\$100,000 - \$149,999	18.9%	20.5%	17.6%
\$150,000 - \$199,999	9.5%	7.9%	6.1%
\$200,000+	5.7%	4.4%	4.0%
Average Household Income	\$93,831	\$88,747	\$82,808
2024 Households by Income			
Household Income Base	4,098	33,206	77,623
<\$15,000	3.8%	3.7%	4.4%
\$15,000 - \$24,999	3.7%	4.2%	5.1%
\$25,000 - \$34,999	5.3%	5.7%	6.7%
\$35,000 - \$49,999	10.7%	10.4%	11.8%
\$50,000 - \$74,999	19.1%	21.0%	22.6%
\$75,000 - \$99,999	16.5%	15.9%	15.8%
\$100,000 - \$149,999	21.3%	23.2%	20.4%
\$150,000 - \$199,999	12.6%	10.4%	8.3%
\$200,000+	7.0%	5.5%	5.0%
Average Household Income	\$107,245	\$101,180	\$94,699
2019 Owner Occupied Housing Units by Value			
Total	2,122	19,355	46,000
<\$50,000	3.5%	1.4%	2.5%
\$50,000 - \$99,999	0.6%	1.8%	3.7%
\$100,000 - \$149,999	8.9%	8.8%	12.3%
\$150,000 - \$199,999	10.4%	15.5%	21.8%
\$200,000 - \$249,999	19.5%	21.6%	18.2%
\$250,000 - \$299,999	23.1%	20.1%	16.3%
\$300,000 - \$399,999	18.3%	17.9%	14.0%
\$400,000 - \$499,999	13.3%	8.5%	6.4%
\$500,000 - \$749,999	1.9%	3.3%	3.4%
\$750,000 - \$999,999	0.1%	0.4%	0.7%
\$1,000,000 - \$1,499,999	0.0%	0.2%	0.2%
\$1,500,000 - \$1,999,999	0.0%	0.2%	0.2%
\$2,000,000 +	0.4%	0.3%	0.3%
Average Home Value	\$283,526	\$281,656	\$260,826
2024 Owner Occupied Housing Units by Value			
Total	2,507	21,965	51,075
<\$50,000	1.6%	0.7%	1.4%
\$50,000 - \$99,999	0.3%	1.0%	2.3%
\$100,000 - \$149,999	4.6%	5.3%	8.2%
\$150,000 - \$199,999	7.1%	11.7%	18.3%
\$200,000 - \$249,999	17.3%	19.7%	17.8%
\$250,000 - \$299,999	23.9%	21.3%	18.2%
\$300,000 - \$399,999	21.6%	21.5%	17.2%
\$400,000 - \$499,999	20.2%	12.6%	9.3%
\$500,000 - \$749,999	2.9%	4.9%	5.4%
\$750,000 - \$999,999	0.2%	0.6%	1.0%
\$1,000,000 - \$1,499,999	0.0%	0.3%	0.3%
\$1,500,000 - \$1,999,999	0.0%	0.2%	0.2%
\$2,000,000 +	0.4%	0.3%	0.3%
Average Home Value	\$318,129	\$312,569	\$294,530

Data Note: Income represents the preceding year, expressed in current dollars. Household income includes wage and salary earnings, interest dividends, net rents, pensions, SSI and welfare payments, child support, and alimony.

Source: U.S. Census Bureau, Census 2010 Summary File 1. Esri forecasts for 2019 and 2024 Esri converted Census 2000 data into 2010 geography.



Community Profile

Paddocks at Mt. Juliet
 300 Pleasant Grove Rd, Mount Juliet, Tennessee, 37122
 Drive Time: 7, 13, 19 minute radii

Prepared by Esri
 Latitude: 36.17805
 Longitude: -86.51411

	7 minutes	13 minutes	19 minutes
2010 Population by Age			
Total	6,441	58,126	146,539
0 - 4	7.1%	7.3%	7.1%
5 - 9	7.0%	7.0%	6.6%
10 - 14	6.7%	6.4%	6.2%
15 - 24	11.6%	12.2%	12.0%
25 - 34	15.4%	16.4%	16.1%
35 - 44	15.5%	15.9%	15.3%
45 - 54	15.1%	15.0%	15.1%
55 - 64	11.3%	11.0%	11.4%
65 - 74	6.1%	5.5%	6.1%
75 - 84	3.2%	2.4%	3.1%
85 +	1.1%	0.8%	1.1%
18 +	75.5%	75.6%	76.5%
2019 Population by Age			
Total	8,797	74,436	178,425
0 - 4	6.0%	6.3%	6.1%
5 - 9	6.5%	6.7%	6.4%
10 - 14	6.7%	6.9%	6.5%
15 - 24	11.0%	11.5%	11.3%
25 - 34	13.8%	14.6%	14.2%
35 - 44	14.1%	14.9%	14.6%
45 - 54	14.0%	14.1%	13.8%
55 - 64	13.6%	12.5%	13.0%
65 - 74	9.3%	8.2%	8.8%
75 - 84	3.9%	3.4%	3.9%
85 +	1.2%	0.9%	1.3%
18 +	77.1%	76.5%	77.4%
2024 Population by Age			
Total	10,094	83,576	195,930
0 - 4	6.1%	6.3%	6.1%
5 - 9	6.4%	6.4%	6.1%
10 - 14	6.8%	6.8%	6.4%
15 - 24	10.9%	11.6%	11.6%
25 - 34	14.1%	14.1%	13.7%
35 - 44	14.0%	14.6%	14.3%
45 - 54	12.9%	13.4%	13.1%
55 - 64	12.6%	12.2%	12.5%
65 - 74	10.1%	9.0%	9.7%
75 - 84	4.8%	4.5%	4.9%
85 +	1.3%	1.1%	1.4%
18 +	76.9%	76.7%	77.6%
2010 Population by Sex			
Males	3,115	28,149	71,898
Females	3,326	29,979	74,641
2019 Population by Sex			
Males	4,295	36,264	87,793
Females	4,503	38,170	90,631
2024 Population by Sex			
Males	4,935	40,644	96,336
Females	5,159	42,931	99,596

Source: U.S. Census Bureau, Census 2010 Summary File 1. Esri forecasts for 2019 and 2024 Esri converted Census 2000 data into 2010 geography.



Community Profile

Paddocks at Mt. Juliet
 300 Pleasant Grove Rd, Mount Juliet, Tennessee, 37122
 Drive Time: 7, 13, 19 minute radii

Prepared by Esri
 Latitude: 36.17805
 Longitude: -86.51411

	7 minutes	13 minutes	19 minutes
2010 Population by Race/Ethnicity			
Total	6,441	58,127	146,538
White Alone	86.9%	80.9%	78.0%
Black Alone	6.3%	11.8%	12.9%
American Indian Alone	0.6%	0.4%	0.4%
Asian Alone	2.8%	2.6%	2.2%
Pacific Islander Alone	0.1%	0.1%	0.1%
Some Other Race Alone	1.4%	1.9%	4.0%
Two or More Races	2.0%	2.3%	2.4%
Hispanic Origin	3.6%	4.5%	7.8%
Diversity Index	29.3	38.8	46.4
2019 Population by Race/Ethnicity			
Total	8,797	74,433	178,423
White Alone	84.8%	79.6%	77.0%
Black Alone	6.3%	11.4%	12.4%
American Indian Alone	0.7%	0.5%	0.5%
Asian Alone	3.7%	3.3%	2.8%
Pacific Islander Alone	0.1%	0.1%	0.1%
Some Other Race Alone	1.7%	2.1%	4.3%
Two or More Races	2.6%	2.9%	2.9%
Hispanic Origin	4.8%	5.3%	8.5%
Diversity Index	34.1	41.7	48.6
2024 Population by Race/Ethnicity			
Total	10,093	83,575	195,931
White Alone	83.2%	78.5%	75.9%
Black Alone	6.5%	11.5%	12.4%
American Indian Alone	0.8%	0.5%	0.5%
Asian Alone	4.6%	3.9%	3.3%
Pacific Islander Alone	0.1%	0.1%	0.1%
Some Other Race Alone	1.8%	2.3%	4.6%
Two or More Races	2.9%	3.2%	3.2%
Hispanic Origin	5.3%	5.8%	9.3%
Diversity Index	37.1	43.9	50.7
2010 Population by Relationship and Household Type			
Total	6,441	58,128	146,539
In Households	99.7%	99.6%	99.4%
In Family Households	85.8%	82.4%	80.9%
Householder	28.1%	26.8%	26.1%
Spouse	21.9%	20.4%	19.3%
Child	30.7%	30.2%	29.2%
Other relative	3.2%	3.0%	3.8%
Nonrelative	1.8%	1.9%	2.5%
In Nonfamily Households	13.9%	17.3%	18.5%
In Group Quarters	0.3%	0.4%	0.6%
Institutionalized Population	0.3%	0.3%	0.4%
Noninstitutionalized Population	0.0%	0.0%	0.2%

Data Note: Persons of Hispanic Origin may be of any race. The Diversity Index measures the probability that two people from the same area will be from different race/ethnic groups.

Source: U.S. Census Bureau, Census 2010 Summary File 1. Esri forecasts for 2019 and 2024 Esri converted Census 2000 data into 2010 geography.



Community Profile

Paddocks at Mt. Juliet
 300 Pleasant Grove Rd, Mount Juliet, Tennessee, 37122
 Drive Time: 7, 13, 19 minute radii

Prepared by Esri
 Latitude: 36.17805
 Longitude: -86.51411

	7 minutes	13 minutes	19 minutes
2019 Population 25+ by Educational Attainment			
Total	6,136	51,105	124,184
Less than 9th Grade	1.9%	1.2%	2.6%
9th - 12th Grade, No Diploma	5.2%	4.1%	5.2%
High School Graduate	18.5%	20.2%	22.0%
GED/Alternative Credential	1.5%	2.8%	3.4%
Some College, No Degree	22.9%	21.7%	21.9%
Associate Degree	8.8%	9.7%	8.7%
Bachelor's Degree	29.5%	27.9%	26.0%
Graduate/Professional Degree	11.6%	12.4%	10.2%
2019 Population 15+ by Marital Status			
Total	7,107	59,666	144,403
Never Married	20.4%	28.5%	30.7%
Married	64.7%	56.3%	52.9%
Widowed	3.1%	3.3%	4.3%
Divorced	11.8%	11.9%	12.1%
2019 Civilian Population 16+ in Labor Force			
Civilian Employed	97.1%	97.6%	97.3%
Civilian Unemployed (Unemployment Rate)	2.9%	2.4%	2.7%
2019 Employed Population 16+ by Industry			
Total	4,761	42,169	101,400
Agriculture/Mining	0.0%	0.1%	0.2%
Construction	4.1%	5.3%	6.7%
Manufacturing	6.9%	7.2%	8.4%
Wholesale Trade	3.2%	3.9%	3.8%
Retail Trade	12.5%	11.0%	10.3%
Transportation/Utilities	5.9%	6.3%	6.9%
Information	4.0%	2.8%	2.4%
Finance/Insurance/Real Estate	9.5%	8.9%	8.1%
Services	48.2%	49.4%	48.2%
Public Administration	5.7%	5.3%	5.0%
2019 Employed Population 16+ by Occupation			
Total	4,762	42,170	101,400
White Collar	71.8%	68.5%	62.9%
Management/Business/Financial	17.9%	16.5%	15.3%
Professional	28.3%	24.9%	20.7%
Sales	9.9%	11.4%	11.3%
Administrative Support	15.6%	15.7%	15.5%
Services	16.2%	15.5%	17.3%
Blue Collar	12.1%	16.0%	19.8%
Farming/Forestry/Fishing	0.0%	0.0%	0.1%
Construction/Extraction	2.7%	3.5%	4.7%
Installation/Maintenance/Repair	2.6%	3.6%	3.8%
Production	3.1%	3.7%	4.9%
Transportation/Material Moving	3.6%	5.3%	6.2%
2010 Population By Urban/ Rural Status			
Total Population	6,441	58,128	146,539
Population Inside Urbanized Area	93.1%	88.0%	83.5%
Population Inside Urbanized Cluster	0.0%	0.3%	5.5%
Rural Population	6.9%	11.8%	11.0%

Source: U.S. Census Bureau, Census 2010 Summary File 1. Esri forecasts for 2019 and 2024 Esri converted Census 2000 data into 2010 geography.



Community Profile

Paddocks at Mt. Juliet
 300 Pleasant Grove Rd, Mount Juliet, Tennessee, 37122
 Drive Time: 7, 13, 19 minute radii

Prepared by Esri
 Latitude: 36.17805
 Longitude: -86.51411

	7 minutes	13 minutes	19 minutes
2010 Households by Type			
Total	2,653	23,456	59,324
Households with 1 Person	23.0%	26.1%	28.0%
Households with 2+ People	77.0%	73.9%	72.0%
Family Households	71.3%	66.6%	64.2%
Husband-wife Families	55.2%	50.7%	47.5%
With Related Children	25.5%	23.8%	21.5%
Other Family (No Spouse Present)	16.1%	15.8%	16.7%
Other Family with Male Householder	3.9%	3.9%	4.7%
With Related Children	2.1%	2.3%	2.7%
Other Family with Female Householder	12.2%	11.9%	12.0%
With Related Children	8.6%	8.4%	7.9%
Nonfamily Households	5.7%	7.3%	7.8%
All Households with Children	36.7%	34.9%	32.6%
Multigenerational Households	3.8%	3.2%	3.5%
Unmarried Partner Households	5.9%	6.3%	6.8%
Male-female	4.9%	5.3%	5.8%
Same-sex	1.1%	1.0%	1.0%
2010 Households by Size			
Total	2,654	23,457	59,323
1 Person Household	23.0%	26.1%	28.0%
2 Person Household	35.4%	34.3%	34.0%
3 Person Household	19.0%	17.8%	16.7%
4 Person Household	14.6%	13.9%	12.8%
5 Person Household	5.8%	5.4%	5.4%
6 Person Household	1.4%	1.7%	1.9%
7 + Person Household	0.8%	0.8%	1.2%
2010 Households by Tenure and Mortgage Status			
Total	2,654	23,456	59,323
Owner Occupied	66.5%	64.2%	64.9%
Owned with a Mortgage/Loan	49.2%	51.1%	49.9%
Owned Free and Clear	17.3%	13.0%	15.0%
Renter Occupied	33.5%	35.8%	35.1%
2010 Housing Units By Urban/ Rural Status			
Total Housing Units	2,869	25,003	63,874
Housing Units Inside Urbanized Area	93.7%	89.1%	85.3%
Housing Units Inside Urbanized Cluster	0.0%	0.2%	5.1%
Rural Housing Units	6.3%	10.7%	9.6%

Data Note: Households with children include any households with people under age 18, related or not. Multigenerational households are families with 3 or more parent-child relationships. Unmarried partner households are usually classified as nonfamily households unless there is another member of the household related to the householder. Multigenerational and unmarried partner households are reported only to the tract level. Esri estimated block group data, which is used to estimate polygons or non-standard geography.

Source: U.S. Census Bureau, Census 2010 Summary File 1. Esri forecasts for 2019 and 2024 Esri converted Census 2000 data into 2010 geography.



Community Profile

Paddocks at Mt. Juliet
 300 Pleasant Grove Rd, Mount Juliet, Tennessee, 37122
 Drive Time: 7, 13, 19 minute radii

Prepared by Esri
 Latitude: 36.17805
 Longitude: -86.51411

	7 minutes	13 minutes	19 minutes
Top 3 Tapestry Segments			
1.	Green Acres (6A)	Soccer Moms (4A)	Green Acres (6A)
2.	Up and Coming Families (7A)	Green Acres (6A)	Soccer Moms (4A)
3.	Down the Road (10D)	Young and Restless (11B)	Young and Restless (11B)
2019 Consumer Spending			
Apparel & Services: Total \$	\$8,341,535	\$66,005,053	\$146,741,140
Average Spent	\$2,326.79	\$2,223.37	\$2,066.98
Spending Potential Index	109	104	96
Education: Total \$	\$5,804,726	\$46,584,724	\$104,244,543
Average Spent	\$1,619.17	\$1,569.20	\$1,468.38
Spending Potential Index	102	98	92
Entertainment/Recreation: Total \$	\$12,604,427	\$97,792,454	\$218,603,286
Average Spent	\$3,515.88	\$3,294.12	\$3,079.22
Spending Potential Index	108	101	94
Food at Home: Total \$	\$19,869,129	\$156,193,630	\$350,986,645
Average Spent	\$5,542.30	\$5,261.35	\$4,943.96
Spending Potential Index	107	102	96
Food Away from Home: Total \$	\$14,444,750	\$114,052,150	\$253,054,754
Average Spent	\$4,029.22	\$3,841.82	\$3,564.50
Spending Potential Index	110	105	97
Health Care: Total \$	\$23,001,990	\$176,247,304	\$397,164,286
Average Spent	\$6,416.18	\$5,936.85	\$5,594.41
Spending Potential Index	108	100	94
HH Furnishings & Equipment: Total \$	\$8,577,466	\$66,292,944	\$146,997,978
Average Spent	\$2,392.60	\$2,233.06	\$2,070.60
Spending Potential Index	112	105	97
Personal Care Products & Services: Total \$	\$3,579,300	\$27,906,710	\$61,690,263
Average Spent	\$998.41	\$940.03	\$868.96
Spending Potential Index	113	106	98
Shelter: Total \$	\$69,517,479	\$552,676,148	\$1,244,814,891
Average Spent	\$19,391.21	\$18,616.77	\$17,534.33
Spending Potential Index	105	101	95
Support Payments/Cash Contributions/Gifts in Kind: Total \$	\$9,677,810	\$73,837,597	\$165,491,037
Average Spent	\$2,699.53	\$2,487.20	\$2,331.09
Spending Potential Index	109	100	94
Travel: Total \$	\$8,711,505	\$67,230,409	\$149,347,805
Average Spent	\$2,429.99	\$2,264.64	\$2,103.70
Spending Potential Index	108	101	94
Vehicle Maintenance & Repairs: Total \$	\$4,490,059	\$35,233,397	\$79,182,125
Average Spent	\$1,252.46	\$1,186.83	\$1,115.35
Spending Potential Index	109	104	97

Data Note: Consumer spending shows the amount spent on a variety of goods and services by households that reside in the area. Expenditures are shown by broad budget categories that are not mutually exclusive. Consumer spending does not equal business revenue. Total and Average Amount Spent Per Household represent annual figures. The Spending Potential Index represents the amount spent in the area relative to a national average of 100.

Source: Consumer Spending data are derived from the 2016 and 2017 Consumer Expenditure Surveys, Bureau of Labor Statistics. Esri.

Source: U.S. Census Bureau, Census 2010 Summary File 1. Esri forecasts for 2019 and 2024 Esri converted Census 2000 data into 2010 geography.