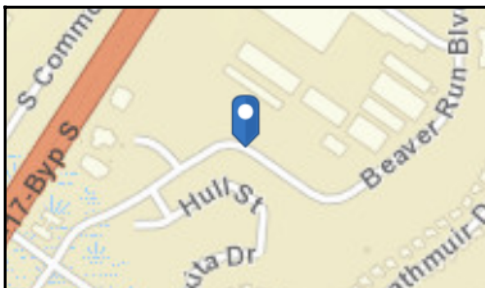
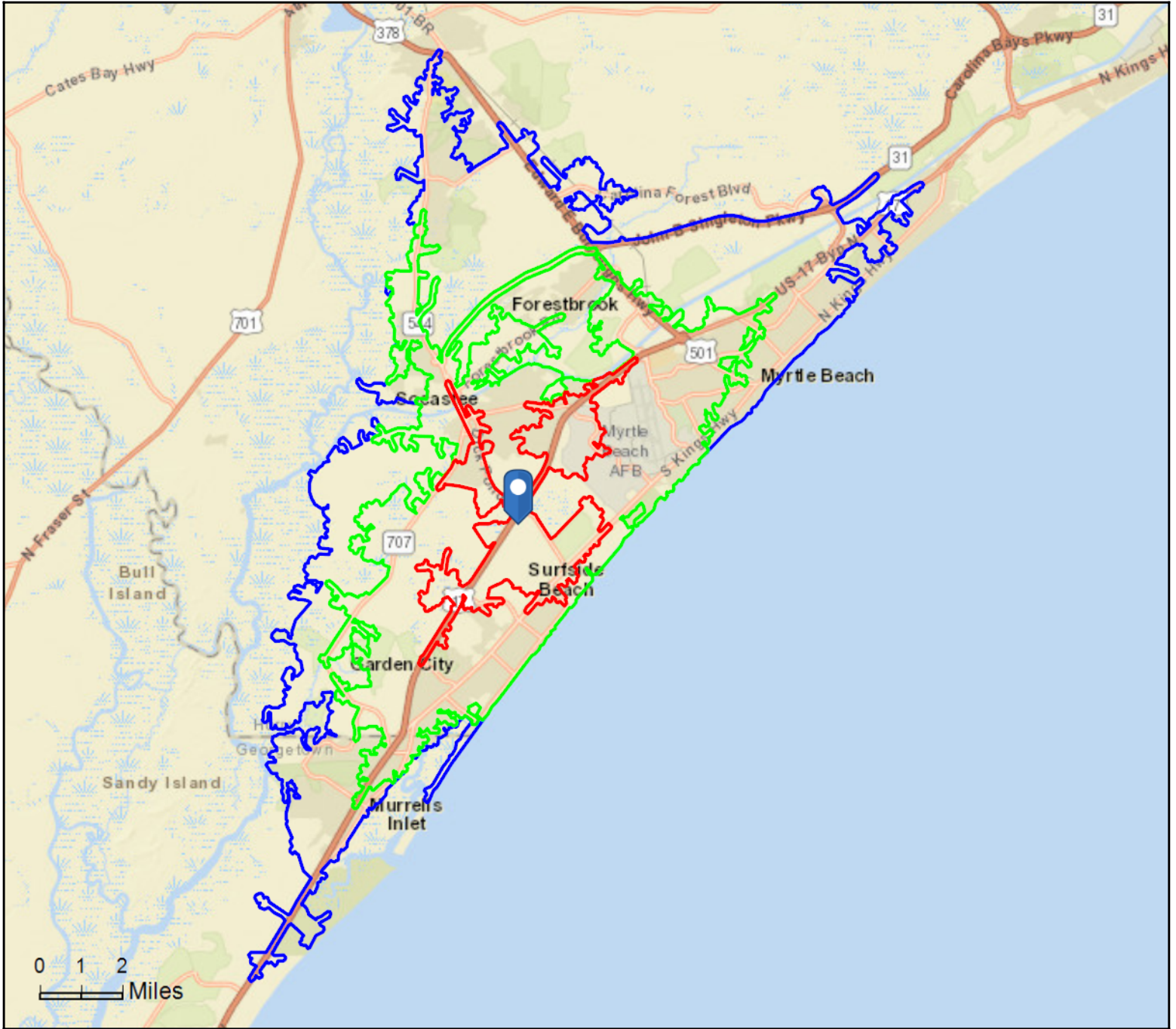


Surfside Commons
2751 Beaver Run Blvd, Myrtle Beach, South Carolina, 29575
Drive Time: 7, 13, 19 minute radii

Prepared by Esri
Latitude: 33.64482
Longitude: -78.98212





Community Profile

Surfside Commons
 2751 Beaver Run Blvd, Myrtle Beach, South Carolina, 29575
 Drive Time: 7, 13, 19 minute radii

Prepared by Esri
 Latitude: 33.64482
 Longitude: -78.98212

	7 minutes	13 minutes	19 minutes
Population Summary			
2000 Total Population	10,126	52,031	88,166
2010 Total Population	12,906	68,904	125,738
2019 Total Population	17,837	88,255	163,256
2019 Group Quarters	4	337	2,312
2024 Total Population	20,162	98,946	183,445
2019-2024 Annual Rate	2.48%	2.31%	2.36%
2019 Total Daytime Population	20,121	96,143	171,205
Workers	10,360	48,949	85,780
Residents	9,761	47,194	85,425
Household Summary			
2000 Households	4,447	22,678	38,615
2000 Average Household Size	2.27	2.28	2.26
2010 Households	5,833	29,721	54,392
2010 Average Household Size	2.21	2.31	2.30
2019 Households	8,152	38,015	69,341
2019 Average Household Size	2.19	2.31	2.32
2024 Households	9,240	42,592	77,938
2024 Average Household Size	2.18	2.32	2.32
2019-2024 Annual Rate	2.54%	2.30%	2.37%
2010 Families	3,758	18,729	33,579
2010 Average Family Size	2.65	2.77	2.77
2019 Families	5,065	23,482	42,033
2019 Average Family Size	2.66	2.80	2.82
2024 Families	5,687	26,147	46,964
2024 Average Family Size	2.66	2.81	2.83
2019-2024 Annual Rate	2.34%	2.17%	2.24%
Housing Unit Summary			
2000 Housing Units	6,677	32,401	53,271
Owner Occupied Housing Units	51.8%	49.8%	50.2%
Renter Occupied Housing Units	14.8%	20.2%	22.2%
Vacant Housing Units	33.4%	30.0%	27.5%
2010 Housing Units	10,102	48,180	84,784
Owner Occupied Housing Units	41.2%	41.4%	42.0%
Renter Occupied Housing Units	16.6%	20.3%	22.1%
Vacant Housing Units	42.3%	38.3%	35.8%
2019 Housing Units	12,789	58,734	103,723
Owner Occupied Housing Units	46.1%	43.8%	44.1%
Renter Occupied Housing Units	17.6%	21.0%	22.7%
Vacant Housing Units	36.3%	35.3%	33.1%
2024 Housing Units	14,297	65,037	115,155
Owner Occupied Housing Units	46.9%	44.4%	44.8%
Renter Occupied Housing Units	17.8%	21.0%	22.9%
Vacant Housing Units	35.4%	34.5%	32.3%
Median Household Income			
2019	\$50,996	\$45,259	\$45,556
2024	\$54,738	\$50,675	\$50,969
Median Home Value			
2019	\$219,738	\$192,700	\$196,804
2024	\$241,746	\$216,259	\$224,482
Per Capita Income			
2019	\$31,341	\$26,959	\$27,652
2024	\$35,490	\$30,882	\$31,608
Median Age			
2010	44.6	42.8	42.0
2019	46.0	44.8	43.4
2024	46.6	45.7	44.1

Data Note: Household population includes persons not residing in group quarters. Average Household Size is the household population divided by total households. Persons in families include the householder and persons related to the householder by birth, marriage, or adoption. Per Capita Income represents the income received by all persons aged 15 years and over divided by the total population.

Source: U.S. Census Bureau, Census 2010 Summary File 1. Esri forecasts for 2019 and 2024 Esri converted Census 2000 data into 2010 geography.



Community Profile

Surfside Commons
 2751 Beaver Run Blvd, Myrtle Beach, South Carolina, 29575
 Drive Time: 7, 13, 19 minute radii

Prepared by Esri
 Latitude: 33.64482
 Longitude: -78.98212

	7 minutes	13 minutes	19 minutes
2019 Households by Income			
Household Income Base	8,152	38,015	69,341
<\$15,000	8.1%	10.4%	11.1%
\$15,000 - \$24,999	10.5%	12.4%	12.6%
\$25,000 - \$34,999	13.1%	14.1%	13.6%
\$35,000 - \$49,999	17.0%	17.5%	16.6%
\$50,000 - \$74,999	22.3%	21.1%	20.1%
\$75,000 - \$99,999	10.7%	10.2%	10.2%
\$100,000 - \$149,999	10.7%	8.6%	9.2%
\$150,000 - \$199,999	3.9%	2.7%	3.0%
\$200,000+	3.9%	3.0%	3.6%
Average Household Income	\$70,388	\$62,618	\$64,784
2024 Households by Income			
Household Income Base	9,240	42,592	77,938
<\$15,000	7.0%	8.9%	9.5%
\$15,000 - \$24,999	9.1%	10.8%	11.0%
\$25,000 - \$34,999	12.3%	13.3%	12.9%
\$35,000 - \$49,999	15.6%	16.1%	15.3%
\$50,000 - \$74,999	22.5%	21.7%	20.6%
\$75,000 - \$99,999	11.4%	11.2%	11.1%
\$100,000 - \$149,999	12.5%	10.5%	11.1%
\$150,000 - \$199,999	5.0%	3.7%	3.9%
\$200,000+	4.7%	3.8%	4.5%
Average Household Income	\$79,516	\$71,780	\$74,098
2019 Owner Occupied Housing Units by Value			
Total	5,901	25,698	45,748
<\$50,000	5.0%	7.7%	6.4%
\$50,000 - \$99,999	6.6%	8.1%	8.0%
\$100,000 - \$149,999	9.6%	14.8%	14.4%
\$150,000 - \$199,999	21.3%	22.7%	22.5%
\$200,000 - \$249,999	18.8%	15.9%	14.5%
\$250,000 - \$299,999	14.5%	11.0%	10.4%
\$300,000 - \$399,999	14.3%	10.9%	11.2%
\$400,000 - \$499,999	5.6%	4.9%	5.5%
\$500,000 - \$749,999	3.7%	3.0%	4.8%
\$750,000 - \$999,999	0.5%	0.7%	1.5%
\$1,000,000 - \$1,499,999	0.0%	0.2%	0.5%
\$1,500,000 - \$1,999,999	0.0%	0.0%	0.0%
\$2,000,000 +	0.0%	0.2%	0.2%
Average Home Value	\$241,325	\$224,595	\$243,719
2024 Owner Occupied Housing Units by Value			
Total	6,702	28,907	51,572
<\$50,000	3.2%	5.9%	4.8%
\$50,000 - \$99,999	4.5%	5.9%	5.9%
\$100,000 - \$149,999	7.0%	11.4%	11.1%
\$150,000 - \$199,999	19.6%	21.4%	20.9%
\$200,000 - \$249,999	18.9%	16.6%	14.9%
\$250,000 - \$299,999	16.1%	12.5%	11.6%
\$300,000 - \$399,999	18.3%	14.3%	14.3%
\$400,000 - \$499,999	7.4%	6.6%	7.3%
\$500,000 - \$749,999	4.5%	3.9%	6.4%
\$750,000 - \$999,999	0.6%	0.9%	1.9%
\$1,000,000 - \$1,499,999	0.0%	0.3%	0.6%
\$1,500,000 - \$1,999,999	0.0%	0.0%	0.0%
\$2,000,000 +	0.0%	0.3%	0.2%
Average Home Value	\$265,248	\$251,814	\$273,893

Data Note: Income represents the preceding year, expressed in current dollars. Household income includes wage and salary earnings, interest dividends, net rents, pensions, SSI and welfare payments, child support, and alimony.

Source: U.S. Census Bureau, Census 2010 Summary File 1. Esri forecasts for 2019 and 2024 Esri converted Census 2000 data into 2010 geography.



Community Profile

Surfside Commons
 2751 Beaver Run Blvd, Myrtle Beach, South Carolina, 29575
 Drive Time: 7, 13, 19 minute radii

Prepared by Esri
 Latitude: 33.64482
 Longitude: -78.98212

	7 minutes	13 minutes	19 minutes
2010 Population by Age			
Total	12,905	68,905	125,738
0 - 4	5.3%	5.6%	5.5%
5 - 9	4.9%	5.1%	5.1%
10 - 14	4.9%	4.9%	4.9%
15 - 24	11.2%	11.5%	12.6%
25 - 34	12.1%	13.2%	13.3%
35 - 44	12.1%	12.4%	12.4%
45 - 54	13.9%	13.8%	13.7%
55 - 64	15.2%	14.5%	14.3%
65 - 74	12.2%	11.3%	11.0%
75 - 84	6.7%	6.0%	5.5%
85 +	1.6%	1.7%	1.6%
18 +	81.8%	81.2%	81.4%
2019 Population by Age			
Total	17,838	88,254	163,255
0 - 4	4.7%	5.0%	4.9%
5 - 9	4.9%	5.1%	4.9%
10 - 14	4.9%	5.2%	5.0%
15 - 24	9.4%	9.6%	11.6%
25 - 34	12.9%	12.9%	13.3%
35 - 44	11.9%	12.3%	12.0%
45 - 54	12.4%	12.3%	12.0%
55 - 64	14.7%	14.4%	14.1%
65 - 74	14.3%	13.5%	13.1%
75 - 84	7.7%	7.3%	6.8%
85 +	2.2%	2.3%	2.2%
18 +	82.7%	81.8%	82.3%
2024 Population by Age			
Total	20,165	98,944	183,447
0 - 4	4.7%	5.0%	5.0%
5 - 9	4.8%	5.0%	4.9%
10 - 14	4.9%	5.2%	5.0%
15 - 24	9.5%	9.9%	11.7%
25 - 34	11.8%	11.5%	12.1%
35 - 44	12.5%	12.5%	12.4%
45 - 54	11.6%	11.8%	11.5%
55 - 64	14.0%	13.8%	13.6%
65 - 74	14.5%	13.9%	13.3%
75 - 84	9.2%	8.7%	8.1%
85 +	2.4%	2.5%	2.4%
18 +	82.8%	81.7%	82.2%
2010 Population by Sex			
Males	6,249	33,724	61,884
Females	6,657	35,180	63,854
2019 Population by Sex			
Males	8,667	43,261	80,227
Females	9,171	44,994	83,029
2024 Population by Sex			
Males	9,800	48,495	90,020
Females	10,362	50,451	93,425

Source: U.S. Census Bureau, Census 2010 Summary File 1. Esri forecasts for 2019 and 2024 Esri converted Census 2000 data into 2010 geography.



Community Profile

Surfside Commons
 2751 Beaver Run Blvd, Myrtle Beach, South Carolina, 29575
 Drive Time: 7, 13, 19 minute radii

Prepared by Esri
 Latitude: 33.64482
 Longitude: -78.98212

	7 minutes	13 minutes	19 minutes
2010 Population by Race/Ethnicity			
Total	12,906	68,904	125,738
White Alone	87.9%	84.3%	83.5%
Black Alone	4.1%	6.9%	8.1%
American Indian Alone	0.5%	0.5%	0.5%
Asian Alone	2.1%	1.5%	1.4%
Pacific Islander Alone	0.1%	0.2%	0.2%
Some Other Race Alone	3.3%	4.3%	4.1%
Two or More Races	2.0%	2.3%	2.2%
Hispanic Origin	7.3%	8.6%	7.8%
Diversity Index	33.0	39.6	39.7
2019 Population by Race/Ethnicity			
Total	17,838	88,256	163,255
White Alone	84.5%	80.9%	79.8%
Black Alone	5.4%	7.9%	9.6%
American Indian Alone	0.5%	0.5%	0.5%
Asian Alone	3.0%	2.2%	2.0%
Pacific Islander Alone	0.1%	0.2%	0.2%
Some Other Race Alone	3.7%	4.9%	4.7%
Two or More Races	2.7%	3.2%	3.1%
Hispanic Origin	8.2%	9.6%	8.9%
Diversity Index	38.9	45.3	45.8
2024 Population by Race/Ethnicity			
Total	20,163	98,946	183,445
White Alone	84.5%	80.9%	79.8%
Black Alone	5.5%	8.0%	9.6%
American Indian Alone	0.5%	0.5%	0.5%
Asian Alone	3.0%	2.2%	2.1%
Pacific Islander Alone	0.1%	0.2%	0.2%
Some Other Race Alone	3.7%	5.0%	4.7%
Two or More Races	2.7%	3.3%	3.1%
Hispanic Origin	8.1%	9.6%	8.9%
Diversity Index	38.9	45.4	45.8
2010 Population by Relationship and Household Type			
Total	12,906	68,904	125,738
In Households	100.0%	99.5%	99.4%
In Family Households	79.7%	78.3%	77.0%
Householder	28.2%	27.2%	26.7%
Spouse	22.0%	20.2%	19.9%
Child	23.6%	24.0%	23.7%
Other relative	3.3%	3.8%	3.8%
Nonrelative	2.6%	3.1%	2.9%
In Nonfamily Households	20.3%	21.2%	22.4%
In Group Quarters	0.0%	0.5%	0.6%
Institutionalized Population	0.0%	0.3%	0.3%
Noninstitutionalized Population	0.0%	0.2%	0.3%

Data Note: Persons of Hispanic Origin may be of any race. The Diversity Index measures the probability that two people from the same area will be from different race/ethnic groups.

Source: U.S. Census Bureau, Census 2010 Summary File 1. Esri forecasts for 2019 and 2024 Esri converted Census 2000 data into 2010 geography.



Community Profile

Surfside Commons
 2751 Beaver Run Blvd, Myrtle Beach, South Carolina, 29575
 Drive Time: 7, 13, 19 minute radii

Prepared by Esri
 Latitude: 33.64482
 Longitude: -78.98212

	7 minutes	13 minutes	19 minutes
2019 Population 25+ by Educational Attainment			
Total	13,554	66,146	119,988
Less than 9th Grade	2.1%	2.9%	2.7%
9th - 12th Grade, No Diploma	3.1%	5.9%	6.0%
High School Graduate	28.0%	28.3%	27.6%
GED/Alternative Credential	3.9%	3.6%	3.3%
Some College, No Degree	23.8%	24.3%	23.8%
Associate Degree	11.3%	11.2%	10.9%
Bachelor's Degree	19.0%	15.8%	16.9%
Graduate/Professional Degree	8.8%	8.1%	8.8%
2019 Population 15+ by Marital Status			
Total	15,237	74,653	138,952
Never Married	26.4%	29.6%	30.6%
Married	56.8%	51.8%	51.5%
Widowed	6.1%	7.0%	6.3%
Divorced	10.7%	11.5%	11.6%
2019 Civilian Population 16+ in Labor Force			
Civilian Employed	97.0%	97.1%	96.8%
Civilian Unemployed (Unemployment Rate)	3.0%	2.9%	3.2%
2019 Employed Population 16+ by Industry			
Total	8,214	41,774	79,216
Agriculture/Mining	0.5%	0.4%	0.4%
Construction	9.4%	11.3%	10.8%
Manufacturing	2.4%	3.2%	3.4%
Wholesale Trade	1.6%	1.6%	1.9%
Retail Trade	14.9%	14.8%	14.9%
Transportation/Utilities	4.9%	3.0%	2.8%
Information	1.9%	1.7%	1.5%
Finance/Insurance/Real Estate	6.2%	6.5%	6.2%
Services	55.3%	55.5%	56.0%
Public Administration	2.8%	2.0%	2.2%
2019 Employed Population 16+ by Occupation			
Total	8,213	41,776	79,216
White Collar	56.6%	53.3%	54.2%
Management/Business/Financial	12.3%	10.6%	11.0%
Professional	16.8%	15.3%	16.0%
Sales	16.0%	15.4%	16.0%
Administrative Support	11.4%	12.0%	11.2%
Services	25.1%	28.1%	28.0%
Blue Collar	18.3%	18.5%	17.9%
Farming/Forestry/Fishing	0.2%	0.3%	0.3%
Construction/Extraction	6.2%	7.6%	6.7%
Installation/Maintenance/Repair	3.4%	3.3%	3.2%
Production	3.5%	3.4%	3.6%
Transportation/Material Moving	5.1%	3.9%	4.1%
2010 Population By Urban/ Rural Status			
Total Population	12,906	68,904	125,738
Population Inside Urbanized Area	100.0%	97.5%	96.3%
Population Inside Urbanized Cluster	0.0%	0.0%	0.0%
Rural Population	0.0%	2.5%	3.7%

Source: U.S. Census Bureau, Census 2010 Summary File 1. Esri forecasts for 2019 and 2024 Esri converted Census 2000 data into 2010 geography.



Community Profile

Surfside Commons
 2751 Beaver Run Blvd, Myrtle Beach, South Carolina, 29575
 Drive Time: 7, 13, 19 minute radii

Prepared by Esri
 Latitude: 33.64482
 Longitude: -78.98212

	7 minutes	13 minutes	19 minutes
2010 Households by Type			
Total	5,833	29,721	54,393
Households with 1 Person	27.3%	27.7%	28.2%
Households with 2+ People	72.7%	72.3%	71.8%
Family Households	64.4%	63.0%	61.7%
Husband-wife Families	50.0%	46.8%	46.1%
With Related Children	15.2%	14.6%	14.6%
Other Family (No Spouse Present)	14.4%	16.2%	15.7%
Other Family with Male Householder	4.3%	4.8%	4.7%
With Related Children	2.6%	2.8%	2.6%
Other Family with Female Householder	10.1%	11.4%	11.0%
With Related Children	6.2%	7.3%	7.1%
Nonfamily Households	8.3%	9.3%	10.1%
All Households with Children	24.4%	25.2%	24.8%
Multigenerational Households	2.9%	3.0%	2.9%
Unmarried Partner Households	7.6%	8.2%	8.0%
Male-female	6.8%	7.4%	7.2%
Same-sex	0.8%	0.8%	0.8%
2010 Households by Size			
Total	5,832	29,721	54,394
1 Person Household	27.3%	27.7%	28.2%
2 Person Household	42.4%	41.2%	40.6%
3 Person Household	14.2%	14.6%	14.7%
4 Person Household	9.8%	9.7%	9.9%
5 Person Household	4.1%	4.3%	4.2%
6 Person Household	1.3%	1.5%	1.5%
7 + Person Household	0.8%	1.0%	0.9%
2010 Households by Tenure and Mortgage Status			
Total	5,833	29,721	54,392
Owner Occupied	71.3%	67.1%	65.5%
Owned with a Mortgage/Loan	47.3%	43.8%	44.0%
Owned Free and Clear	23.9%	23.3%	21.5%
Renter Occupied	28.7%	32.9%	34.5%
2010 Housing Units By Urban/ Rural Status			
Total Housing Units	10,102	48,180	84,784
Housing Units Inside Urbanized Area	100.0%	98.4%	97.0%
Housing Units Inside Urbanized Cluster	0.0%	0.0%	0.0%
Rural Housing Units	0.0%	1.6%	3.0%

Data Note: Households with children include any households with people under age 18, related or not. Multigenerational households are families with 3 or more parent-child relationships. Unmarried partner households are usually classified as nonfamily households unless there is another member of the household related to the householder. Multigenerational and unmarried partner households are reported only to the tract level. Esri estimated block group data, which is used to estimate polygons or non-standard geography.

Source: U.S. Census Bureau, Census 2010 Summary File 1. Esri forecasts for 2019 and 2024 Esri converted Census 2000 data into 2010 geography.



Community Profile

Surfside Commons
 2751 Beaver Run Blvd, Myrtle Beach, South Carolina, 29575
 Drive Time: 7, 13, 19 minute radii

Prepared by Esri
 Latitude: 33.64482
 Longitude: -78.98212

	7 minutes	13 minutes	19 minutes
Top 3 Tapestry Segments			
1.	Silver & Gold (9A)	Old and Newcomers (8F)	Old and Newcomers (8F)
2.	Old and Newcomers (8F)	Silver & Gold (9A)	Silver & Gold (9A)
3.	Emerald City (8B)	The Great Outdoors (6C)	The Great Outdoors (6C)
2019 Consumer Spending			
Apparel & Services: Total \$	\$13,963,198	\$58,283,591	\$110,793,486
Average Spent	\$1,712.86	\$1,533.17	\$1,597.81
Spending Potential Index	80	72	75
Education: Total \$	\$9,640,282	\$39,035,375	\$74,321,234
Average Spent	\$1,182.57	\$1,026.84	\$1,071.82
Spending Potential Index	74	64	67
Entertainment/Recreation: Total \$	\$21,611,358	\$90,911,132	\$170,979,766
Average Spent	\$2,651.05	\$2,391.45	\$2,465.78
Spending Potential Index	81	73	75
Food at Home: Total \$	\$34,208,777	\$145,451,374	\$274,885,678
Average Spent	\$4,196.37	\$3,826.16	\$3,964.26
Spending Potential Index	81	74	77
Food Away from Home: Total \$	\$24,210,586	\$101,103,627	\$191,968,916
Average Spent	\$2,969.90	\$2,659.57	\$2,768.48
Spending Potential Index	81	72	75
Health Care: Total \$	\$40,496,473	\$170,597,899	\$319,557,213
Average Spent	\$4,967.67	\$4,487.65	\$4,608.49
Spending Potential Index	84	76	78
HH Furnishings & Equipment: Total \$	\$14,254,587	\$59,309,931	\$111,948,228
Average Spent	\$1,748.60	\$1,560.17	\$1,614.46
Spending Potential Index	82	73	76
Personal Care Products & Services: Total \$	\$6,038,646	\$24,857,148	\$47,058,924
Average Spent	\$740.76	\$653.88	\$678.66
Spending Potential Index	84	74	77
Shelter: Total \$	\$120,416,177	\$501,227,768	\$950,160,096
Average Spent	\$14,771.37	\$13,185.00	\$13,702.72
Spending Potential Index	80	71	74
Support Payments/Cash Contributions/Gifts in Kind: Total \$	\$17,298,989	\$70,978,341	\$133,433,593
Average Spent	\$2,122.05	\$1,867.11	\$1,924.31
Spending Potential Index	86	75	78
Travel: Total \$	\$14,948,842	\$61,326,660	\$114,990,929
Average Spent	\$1,833.76	\$1,613.22	\$1,658.34
Spending Potential Index	82	72	74
Vehicle Maintenance & Repairs: Total \$	\$7,845,422	\$32,860,125	\$62,521,369
Average Spent	\$962.39	\$864.40	\$901.65
Spending Potential Index	84	76	79

Data Note: Consumer spending shows the amount spent on a variety of goods and services by households that reside in the area. Expenditures are shown by broad budget categories that are not mutually exclusive. Consumer spending does not equal business revenue. Total and Average Amount Spent Per Household represent annual figures. The Spending Potential Index represents the amount spent in the area relative to a national average of 100.

Source: Consumer Spending data are derived from the 2016 and 2017 Consumer Expenditure Surveys, Bureau of Labor Statistics. Esri.

Source: U.S. Census Bureau, Census 2010 Summary File 1. Esri forecasts for 2019 and 2024 Esri converted Census 2000 data into 2010 geography.