

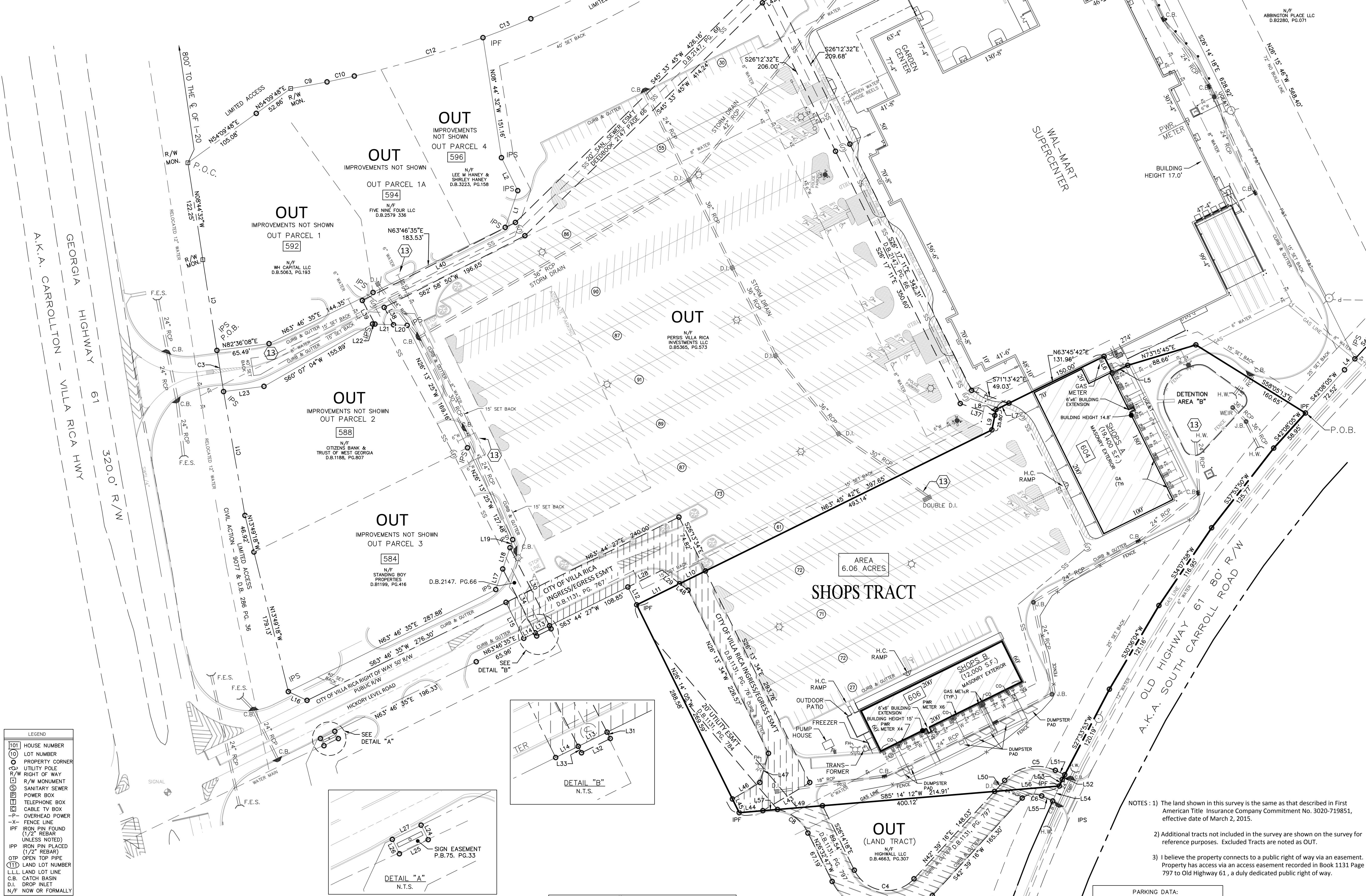
Parcel Line Table with columns for Line #, Length, and Direction. Rows include L1 through L20 with various measurements and bearings.

Parcel Line Table with columns for Line #, Length, and Direction. Rows include L21 through L30 with various measurements and bearings.

Parcel Line Table with columns for Line #, Length, and Direction. Rows include L31 through L40 with various measurements and bearings.

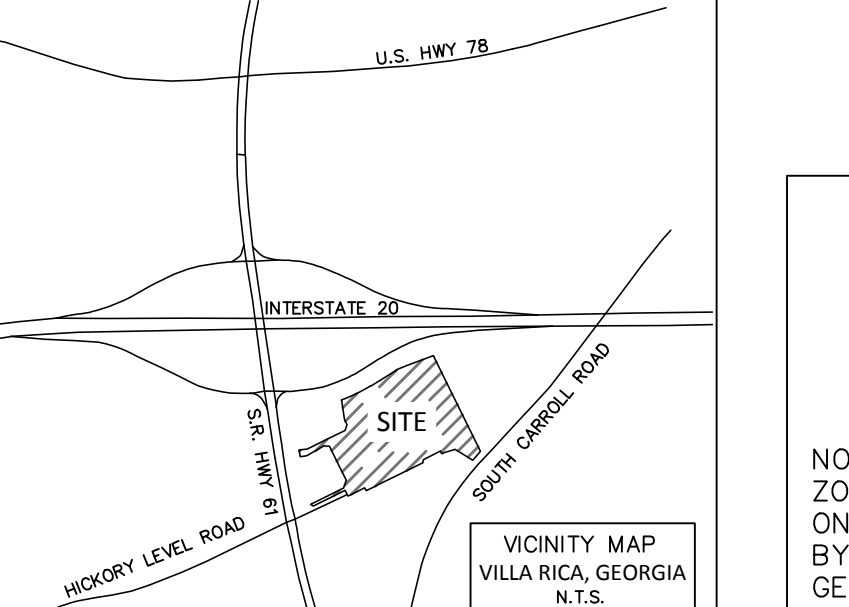
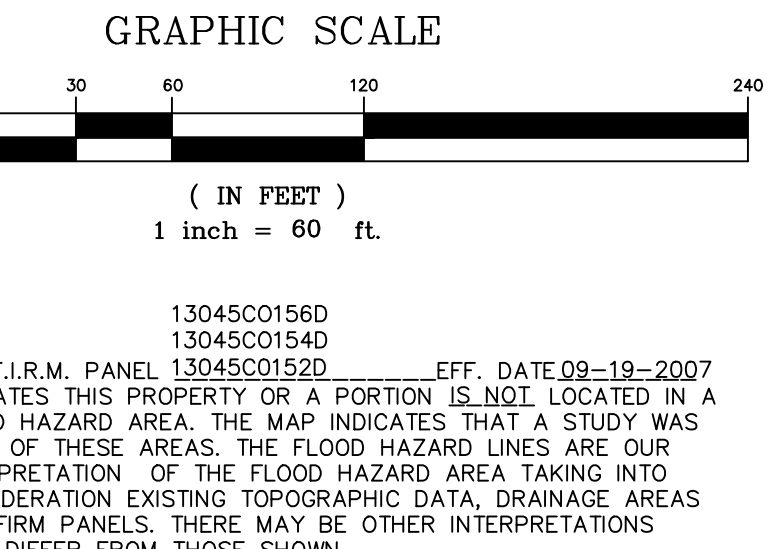
Parcel Line Table with columns for Line #, Length, and Direction. Rows include L41 through L50 with various measurements and bearings.

Curve Table with columns for Curve #, Length, Radius, Chord Direction, and Chord Length. Rows include C1 through C14 with various curve specifications.



LEGEND table with symbols for catch basins, lot numbers, utility poles, and other infrastructure. Includes items like 1033 CATCH BASIN, 1034 CATCH BASIN, 1035 CATCH BASIN, etc.

LEGEND table with symbols for construction limits, water valves, gas valves, and other site features. Includes items like CONSTRUCTION LIMITS, WATER VALVE, GAS VALVE, etc.



ZONING: GENERAL COMMERCIAL
BUILDING SET-BACKS LINE
a. Front 40 Feet
b. Street Side 25 Feet
c. Interior Side/Rear 15 Feet

PARKING DATA table with columns for SHOPS TRACT (REGULAR SPACES, HANDICAP SPACES, TOTAL), WAL-MART (REGULAR SPACES, HANDICAP SPACES, TOTAL), and TOTAL.

NOTE: SET-BACKS SHOWN UNDER CURRENT ZONING DIFFERS FROM THE SET-BACKS SHOWN ON THE FINAL SUBDIVISION PLAT APPROVED BY THE PLANNING COMMISSION OF VILLA RICA, GEORGIA, RECORDED IN P.B.75, PG.33

THAT TRACT OR PARCEL OF LAND LYING AND BEING IN LAND LOT 151 OF THE 6TH DISTRICT, CARROLL COUNTY, GEORGIA, AND BEING MORE PARTICULARLY DESCRIBED AS FOLLOWS:
COMMENCE AT A RIGHT-OF-WAY MONUMENT LOCATED AT THE INTERSECTION OF THE EASTERN RIGHT-OF-WAY LINE OF GEORGIA HIGHWAY 61 (200' FOOT RIGHT-OF-WAY) AND THE SOUTHERN RIGHT-OF-WAY LINE OF INTERSTATE HIGHWAY 20 VARIABLE R/W & D.B. 296 PG. 36 AND HAVING A BEARING OF N11° 16' 26"E... [Detailed survey description follows]

TOGETHER WITH THOSE EASEMENT RIGHTS UNDER THAT CERTAIN EASEMENT AGREEMENT... [Legal description of easements and encumbrances]

To: RIVERCREST REALTY ASSOCIATES LLC, FIRST AMERICAN TITLE INSURANCE COMPANY
THIS IS TO CERTIFY THAT THIS MAP OR PLAT AND THE SURVEY ON WHICH IT IS BASED were made in accordance with the 2011 Minimum Standard Detail Requirements for ALTA/ACSM Land Title Surveys... [Professional certification text]

SURVEYORS COMMENTS
ALL THE FOLLOWING ITEMS REFER TO THE AGENT'S FILE NO. 3020-719851
PREPARED BY: FIRST AMERICAN TITLE INSURANCE COMPANY, SURVEYORS COMMENTS IN PARENTHESIS.
12. TERMS AND PROVISIONS OF THAT CERTAIN ACCESS EASEMENT AGREEMENT... [Detailed survey notes]

GENERAL NOTES
1. NO WARRANTY OR GUARANTEE AS TO THE EXISTENCE OR LOCATION OF ALL UTILITIES... [Standard disclaimer notes]