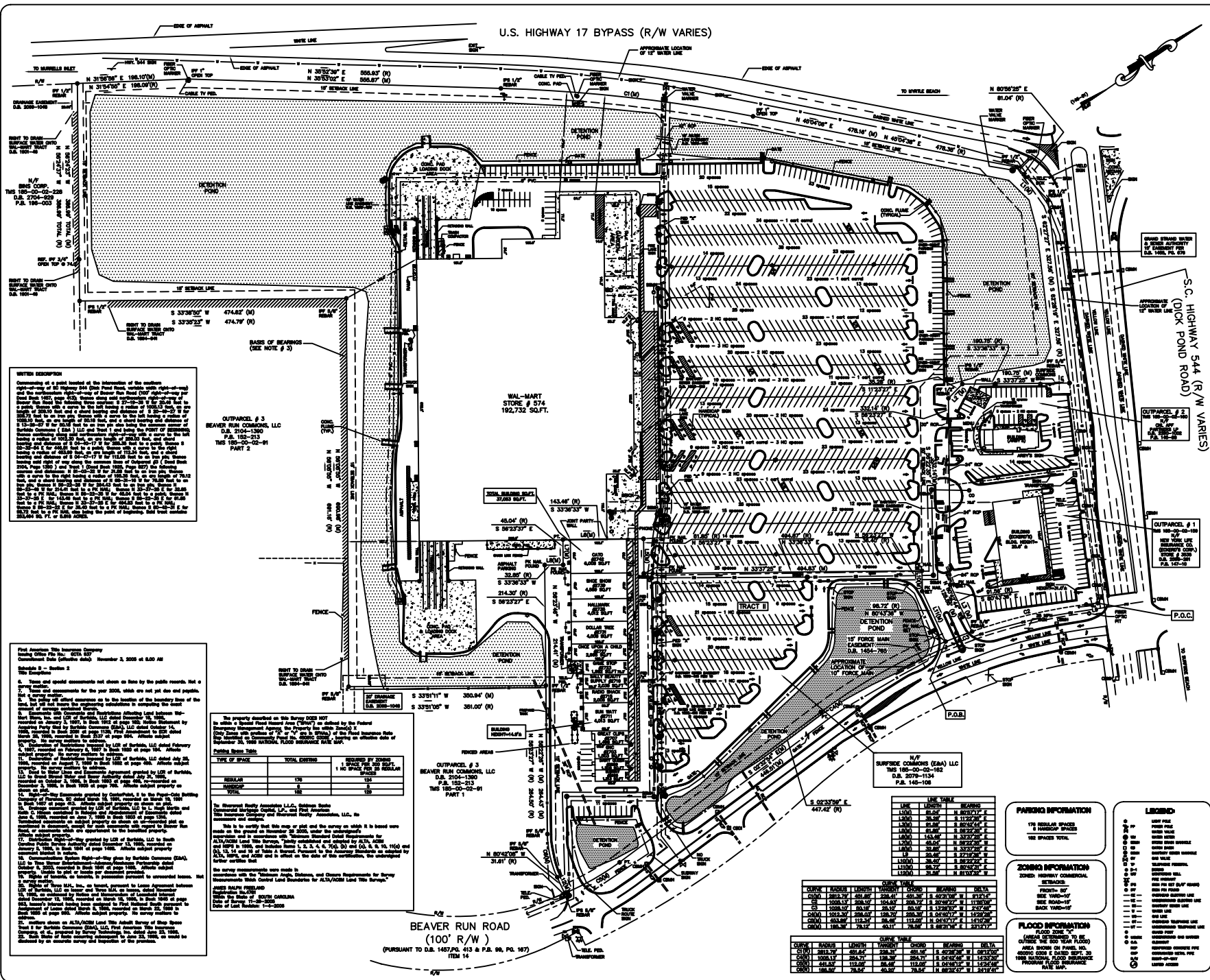


U.S. HIGHWAY 17 BYPASS (R/W VARIES)



WRITER DESCRIPTION
 This is a plat of a portion of the subdivision of the land...
 (Detailed description of the survey and its purpose, including references to previous surveys and legal descriptions.)

First Addition This Survey
 This survey was made in accordance with the provisions of...
 (Detailed description of the survey process, including the date and location of the survey.)

OUTPARCEL # 3
 BEAVER RUN COMMONS, LLC
 D.B. 150-1390
 P.B. 150-213
 TMS 185-02-02-01
 PART 2

WAL-MART
 STORE # 574
 192,732 SQ.FT.

H/P SURFACE COMMONS (EMA) LC
 TMS 185-02-02-162
 D.B. 277-1134
 P.B. 145-108

PERMITS

TYPE OF SPACE	TOTAL EXISTING	1 BEAVER RUN STORE	100' WIDE PARKING LOT
RETAIL	178	120	120
TOTAL	178	120	120

OUTPARCEL # 3
 BEAVER RUN COMMONS, LLC
 D.B. 150-1390
 P.B. 150-213
 TMS 185-02-02-01
 PART 1

BEAVER RUN ROAD
 (100' R/W)
 (PURSUANT TO D.B. 1457.P.0. 413 & P.B. 96. P.0. 167)
 ITEM 14

CURVE TABLE

STATION	BEARING	LENGTH	CHORD	BEARING	DELTA
1+00.00	S 89°52'30" E	200.00	199.98	S 89°52'30" E	0.00
1+200.00	S 89°52'30" E	200.00	199.98	S 89°52'30" E	0.00
1+400.00	S 89°52'30" E	200.00	199.98	S 89°52'30" E	0.00
1+600.00	S 89°52'30" E	200.00	199.98	S 89°52'30" E	0.00
1+800.00	S 89°52'30" E	200.00	199.98	S 89°52'30" E	0.00
2+000.00	S 89°52'30" E	200.00	199.98	S 89°52'30" E	0.00
2+200.00	S 89°52'30" E	200.00	199.98	S 89°52'30" E	0.00
2+400.00	S 89°52'30" E	200.00	199.98	S 89°52'30" E	0.00
2+600.00	S 89°52'30" E	200.00	199.98	S 89°52'30" E	0.00
2+800.00	S 89°52'30" E	200.00	199.98	S 89°52'30" E	0.00
3+000.00	S 89°52'30" E	200.00	199.98	S 89°52'30" E	0.00
3+200.00	S 89°52'30" E	200.00	199.98	S 89°52'30" E	0.00
3+400.00	S 89°52'30" E	200.00	199.98	S 89°52'30" E	0.00
3+600.00	S 89°52'30" E	200.00	199.98	S 89°52'30" E	0.00
3+800.00	S 89°52'30" E	200.00	199.98	S 89°52'30" E	0.00
4+000.00	S 89°52'30" E	200.00	199.98	S 89°52'30" E	0.00
4+200.00	S 89°52'30" E	200.00	199.98	S 89°52'30" E	0.00
4+400.00	S 89°52'30" E	200.00	199.98	S 89°52'30" E	0.00
4+600.00	S 89°52'30" E	200.00	199.98	S 89°52'30" E	0.00
4+800.00	S 89°52'30" E	200.00	199.98	S 89°52'30" E	0.00
5+000.00	S 89°52'30" E	200.00	199.98	S 89°52'30" E	0.00
5+200.00	S 89°52'30" E	200.00	199.98	S 89°52'30" E	0.00
5+400.00	S 89°52'30" E	200.00	199.98	S 89°52'30" E	0.00
5+600.00	S 89°52'30" E	200.00	199.98	S 89°52'30" E	0.00
5+800.00	S 89°52'30" E	200.00	199.98	S 89°52'30" E	0.00
6+000.00	S 89°52'30" E	200.00	199.98	S 89°52'30" E	0.00
6+200.00	S 89°52'30" E	200.00	199.98	S 89°52'30" E	0.00
6+400.00	S 89°52'30" E	200.00	199.98	S 89°52'30" E	0.00
6+600.00	S 89°52'30" E	200.00	199.98	S 89°52'30" E	0.00
6+800.00	S 89°52'30" E	200.00	199.98	S 89°52'30" E	0.00
7+000.00	S 89°52'30" E	200.00	199.98	S 89°52'30" E	0.00
7+200.00	S 89°52'30" E	200.00	199.98	S 89°52'30" E	0.00
7+400.00	S 89°52'30" E	200.00	199.98	S 89°52'30" E	0.00
7+600.00	S 89°52'30" E	200.00	199.98	S 89°52'30" E	0.00
7+800.00	S 89°52'30" E	200.00	199.98	S 89°52'30" E	0.00
8+000.00	S 89°52'30" E	200.00	199.98	S 89°52'30" E	0.00
8+200.00	S 89°52'30" E	200.00	199.98	S 89°52'30" E	0.00
8+400.00	S 89°52'30" E	200.00	199.98	S 89°52'30" E	0.00
8+600.00	S 89°52'30" E	200.00	199.98	S 89°52'30" E	0.00
8+800.00	S 89°52'30" E	200.00	199.98	S 89°52'30" E	0.00
9+000.00	S 89°52'30" E	200.00	199.98	S 89°52'30" E	0.00
9+200.00	S 89°52'30" E	200.00	199.98	S 89°52'30" E	0.00
9+400.00	S 89°52'30" E	200.00	199.98	S 89°52'30" E	0.00
9+600.00	S 89°52'30" E	200.00	199.98	S 89°52'30" E	0.00
9+800.00	S 89°52'30" E	200.00	199.98	S 89°52'30" E	0.00
10+000.00	S 89°52'30" E	200.00	199.98	S 89°52'30" E	0.00

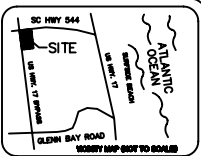
PARKING INFORMATION
 178 REGULAR SPACES
 8 SPACES TOTAL

SCHEMATIC INFORMATION
 SHOWS HIGHWAY CORRECTIONS
 SETBACKS
 FRONT 10'
 SIDE 10'-0"
 BACK 10'-0"

FLOOD INFORMATION
 FLOOD ZONE TO BE SHOWN ON THIS PLAN
 AREA SHOWN ON PANEL NO. 10
 SOURCE: FEMA'S 1:50,000 SCALE
 1986 NATIONAL FLOOD INSURANCE PROGRAM FLOOD INSURANCE RATE MAP.

LEGEND

- 1" = 100'
- 1" = 200'
- 1" = 300'
- 1" = 400'
- 1" = 500'
- 1" = 600'
- 1" = 700'
- 1" = 800'
- 1" = 900'
- 1" = 1000'
- 1" = 1100'
- 1" = 1200'
- 1" = 1300'
- 1" = 1400'
- 1" = 1500'
- 1" = 1600'
- 1" = 1700'
- 1" = 1800'
- 1" = 1900'
- 1" = 2000'
- 1" = 2100'
- 1" = 2200'
- 1" = 2300'
- 1" = 2400'
- 1" = 2500'
- 1" = 2600'
- 1" = 2700'
- 1" = 2800'
- 1" = 2900'
- 1" = 3000'
- 1" = 3100'
- 1" = 3200'
- 1" = 3300'
- 1" = 3400'
- 1" = 3500'
- 1" = 3600'
- 1" = 3700'
- 1" = 3800'
- 1" = 3900'
- 1" = 4000'
- 1" = 4100'
- 1" = 4200'
- 1" = 4300'
- 1" = 4400'
- 1" = 4500'
- 1" = 4600'
- 1" = 4700'
- 1" = 4800'
- 1" = 4900'
- 1" = 5000'
- 1" = 5100'
- 1" = 5200'
- 1" = 5300'
- 1" = 5400'
- 1" = 5500'
- 1" = 5600'
- 1" = 5700'
- 1" = 5800'
- 1" = 5900'
- 1" = 6000'
- 1" = 6100'
- 1" = 6200'
- 1" = 6300'
- 1" = 6400'
- 1" = 6500'
- 1" = 6600'
- 1" = 6700'
- 1" = 6800'
- 1" = 6900'
- 1" = 7000'
- 1" = 7100'
- 1" = 7200'
- 1" = 7300'
- 1" = 7400'
- 1" = 7500'
- 1" = 7600'
- 1" = 7700'
- 1" = 7800'
- 1" = 7900'
- 1" = 8000'
- 1" = 8100'
- 1" = 8200'
- 1" = 8300'
- 1" = 8400'
- 1" = 8500'
- 1" = 8600'
- 1" = 8700'
- 1" = 8800'
- 1" = 8900'
- 1" = 9000'
- 1" = 9100'
- 1" = 9200'
- 1" = 9300'
- 1" = 9400'
- 1" = 9500'
- 1" = 9600'
- 1" = 9700'
- 1" = 9800'
- 1" = 9900'
- 1" = 10000'



SURVEYOR'S NOTES
 1) THIS SURVEY WAS MADE IN ACCORDANCE WITH THE PROVISIONS OF...
 2) THE SURVEYOR HAS REVIEWED THE RECORD PLANS...
 3) THE SURVEYOR HAS REVIEWED THE RECORD PLANS...
 4) SHOPS TRACT HAS ACCESS TO BEAVER RUN ROAD.

POSSIBLE ENCROACHMENTS

LAND AREA
 253,464 SQ.FT.
 5.818 ACRES

BASES OF BEARINGS AND ENCROACHMENTS

CERTIFICATE
 I, the undersigned, Surveyor, do hereby certify that the above is a true and correct copy of the original...
 DATED: JANUARY 15, 2008
 James G. Priddy, Surveyor
 License No. 478

STREET ADDRESS
 2781 BEAVER RUN BOULEVARD
 SURFSCOE, SC 29575

Breland
 SURVEYORS & ENGINEERS
 BRELAND & ASSOCIATES, INC.
 233 WEST STONE AVE.
 FREDERICK, MD 21701
 TEL: (888) 277-4824 FAX: (888) 233-0318
 www.breland-engineers.com

STATE OF SOUTH CAROLINA
 Horry County
 SOGASTEE TOWNSHIP
 ALTA/ACSM LAND TITLE SURVEY FOR
 RIVERCREST REALTY ASSOCIATES, LLC
 "SURFACE COMMONS"